

À LA CARTE MENU

HIGH SCHOOL PRICING

A la carte items are food and beverages that are available for purchase for an additional cost above regular meal prices. Parents/guardians should talk it over with their child(ren), if they are able to purchase anything additional.

Extra entrees are available to students who would like an additional serving of the main entrée item.

BREAKFAST ITEMS

Adult Breakfast	\$4.00
Single Breakfast Entrée	\$2.00
Cereal	\$2.00
Toast	\$1.00

LUNCH ITEMS

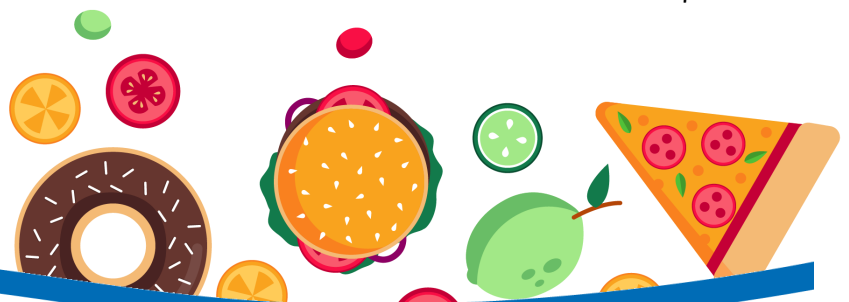
Adult Lunch	\$5.00
Lunch Entrée/Sandwich	\$3.00
Chef Salad	\$5.00
House Made Pizza	\$2.75

SMART SNACKS

Mini Donut Holes 3oz. Cup	\$2.00
Donut Dunkin Sticks, 3.25oz.	\$2.50
Cocoa Pull Apart Donuts	\$1.50
PB&J, 2.6oz.	\$2.00
Rice Krispie Bar	\$1.50
Cocoa Cherry Bar	\$1.00
Cheetos/Chips/Brownies	\$1.00
Scooby Gummies	\$1.00
Cookies	\$0.75

DRINKS & SIDES

Juice	\$0.75
Fruit	\$1.00
Water (8oz.)	\$0.50
Water (16oz.)	\$1.00
Sparkling Ice	\$1.50
Izzy Bev, 8.4oz.	\$2.00
Milk	\$1.00
Vegetables	\$1.00
Iced Coffee	\$2.00



St. Lucie
PUBLIC SCHOOLS

AN "A" RATED
DESTINATION DISTRICT



STLUCIESCHOOLS.ORG

